

MONTHLY MEMBERSHIP PROGRESS REPORT

LOCATION INDIA

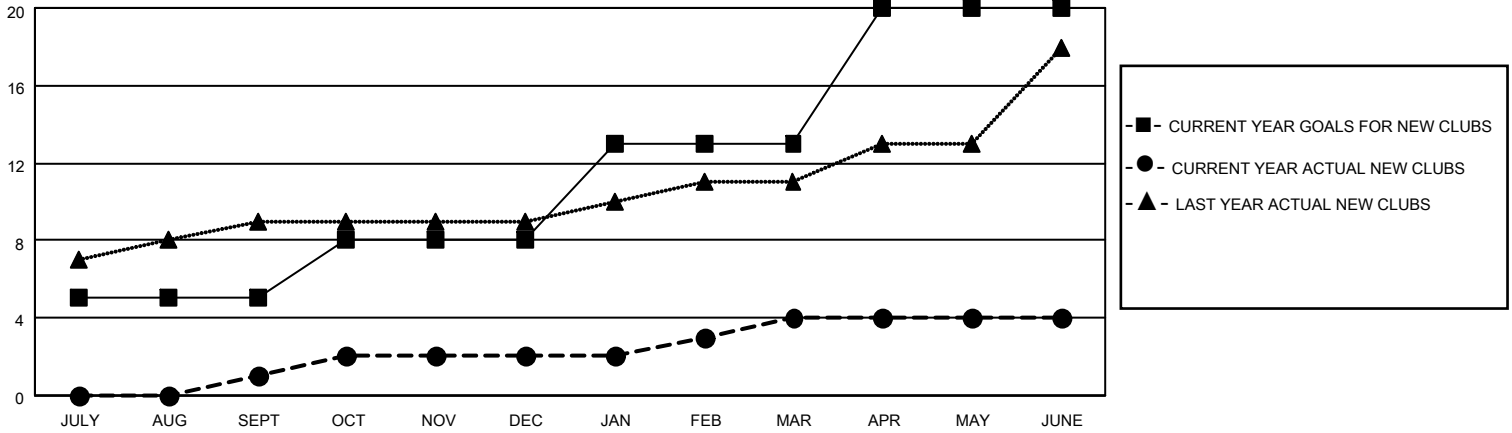
District 321C2

Results as of: 6/30/2023

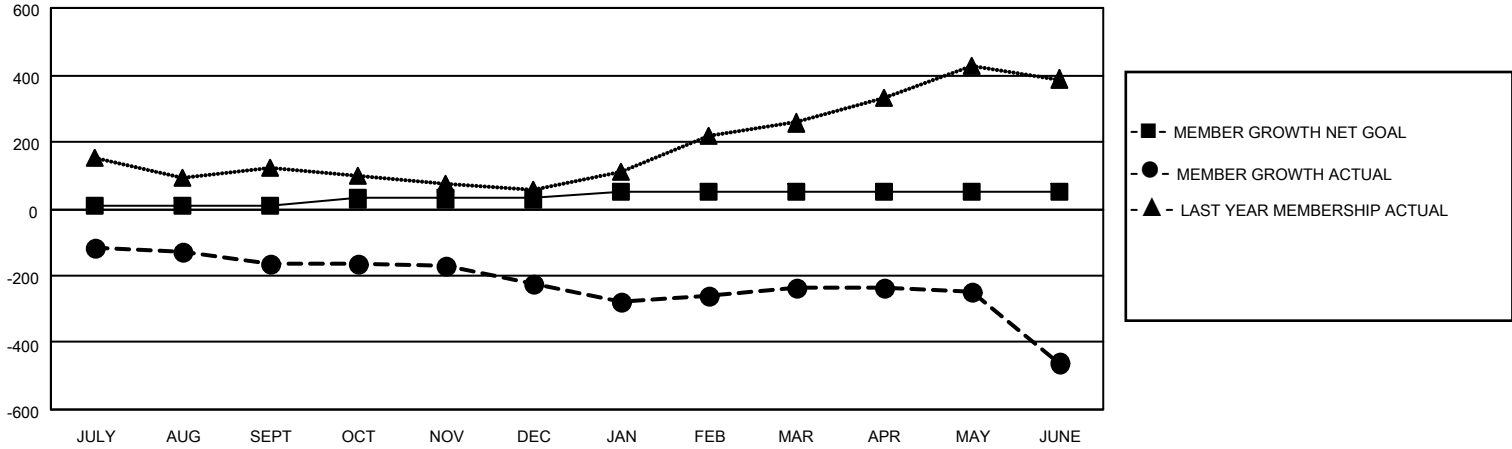
Clubs			
RESULTS FOR 2022-2023			
QUARTER	NEW CLUB GOAL	NEW CLUBS	DROPPED CLUBS
JULY/AUG/SEPT	5	1	2
OCT/NOV/DEC	3	1	2
JAN/FEB/MAR	5	2	0
APR/MAY/JUNE	7	0	2

Members			
RESULTS FOR 2022-2023			
QUARTER	MEMBER GROWTH NET GOAL	MEMBER GROWTH ACTUAL	DROPPED MEMBERS ACTUAL (including transfers)
JULY/AUG/SEPT	10	102	240
OCT/NOV/DEC	20	49	106
JAN/FEB/MAR	20	138	89
APR/MAY/JUNE	0	73	276

GOALS AND ACTUAL NEW CLUBS CUMULATIVE



GOALS AND ACTUAL MEMBERS CUMULATIVE



DROPPED CLUBS: 6	
DROPPED MEMBERS	
DECEASED	9
CLUB CANCELLED	100
OTHER	602
TOTAL	711

52 CLUBS OF 88 ADDED 1 OR MORE NEW MEMBERS

[CLICK HERE FOR CUMULATIVE MEMBERSHIP DATA](#)

<u>GENDER DISTRIBUTION</u>	
MALE	1,745 (61.47%)
FEMALE	1,094 (38.53%)
NON BINARY	0 (0.00%)
PREFER NOT TO ANSWER	0 (0.00%)
TOTAL FAMILY UNIT MEMBERS	2,057
FAMILY MEMBERS PAYING HALF DUES	1,386